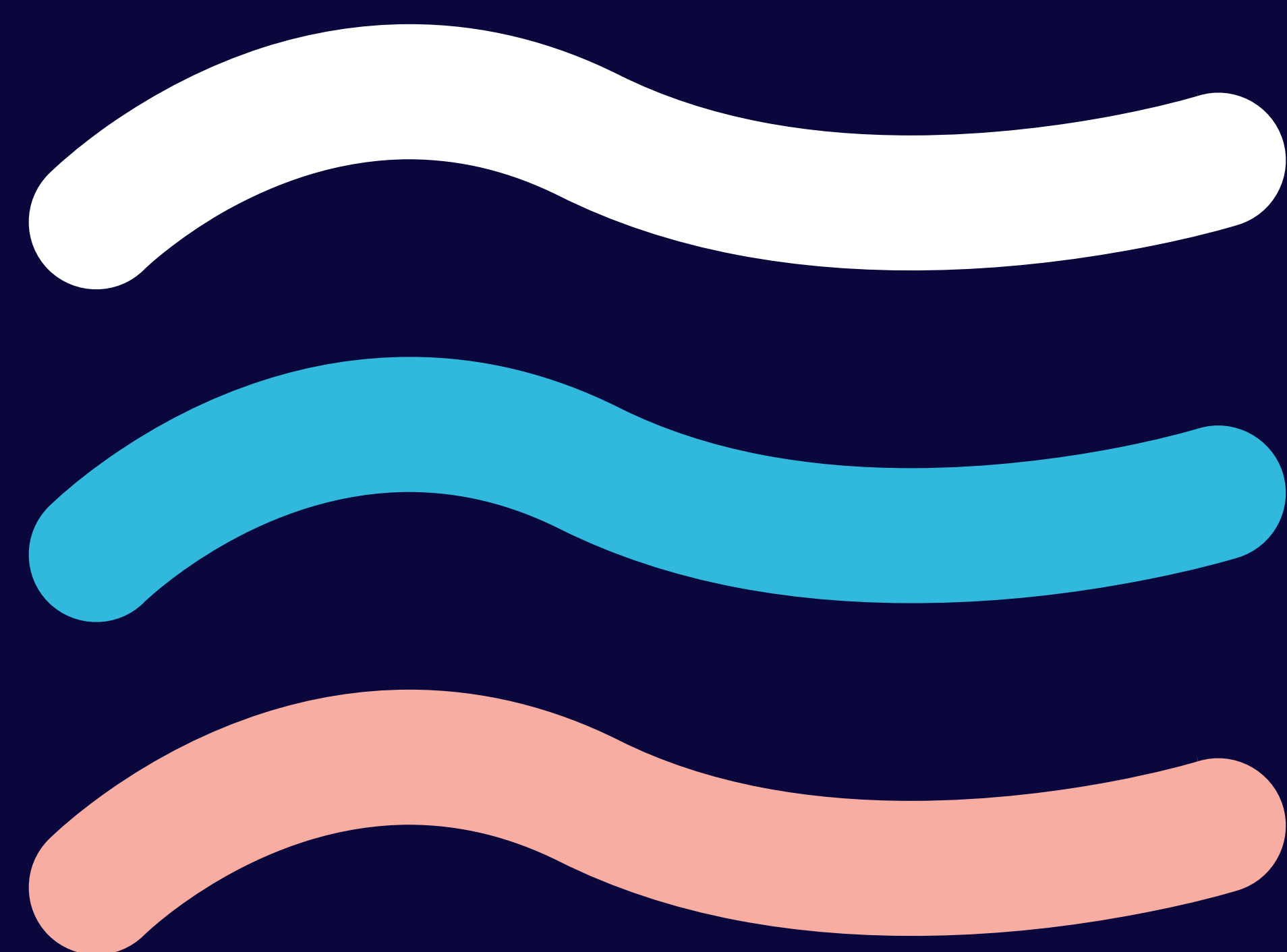


BLUEGAME 74



BLUEGAME 74



PRESENTING

BLUEGAME 74

↔
22,8m

👤
12

🛏️
3

🚿
3



PRESENTING

BLUEGAME 74

↔
22,8m

12

3

3



The BG74, designed by Architect Luca Santella, maintains the engineering chassis of the BGX models with the high-performance hull created in collaboration with the naval architect Lou Codega and the advanced Volvo IPS propulsion system that ensures high performance and low consumption. The BG74 inherits from the BG range the original simplicity of use, easy manoeuvrability, comfort, safety during navigation and offers for the first time on an open yacht a cockpit with 360° visibility characterised by the windscreen with inverted glass and the possibility of total closure which guarantees protection in adverse weather conditions or privacy in the presence of the crew.

The outdoor areas are arranged over three levels; the beach area in close contact with the sea, the large living area with sunlounge/sofa in continuity with the dining area, a spacious bow area equipped and flexible on the main deck and, finally, an easily accessible and enjoyable sundeck.


The interiors can be tailored to the owner's needs, depending on whether living on the boat in a more convivial or more private way: the saloon with direct access from the platform, as on the BGX, can be replaced by the owner's cabin, offering stunning views and the opportunity of waking up directly in contact with the sea.


The owner of the vessel that was be presented at the Boat Shows 2021 (Cannes Yachting Festival, Monaco Yacht Show and Genoa Boat Show) chose the version with the saloon overlooking the beach area and interiors with very distinctive materials and colors: Canaletto walnut wood combined with leather and fabrics in light and blue tones that convey personality and sophistication.





SPECS

BLUEGAME 74


22,8m


12


3


3

DIMENSIONS

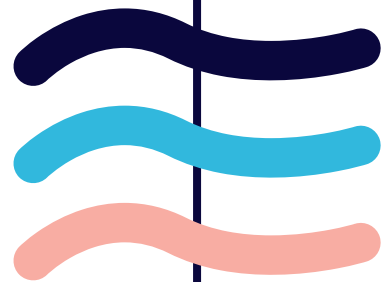
Year 2023

Length 22,82 m / 74’9”

Beam 5,6 m / 18’3”

Depth 1,6 m / 5’2”

Displacement 18800 kg




FEATURES & PERFORMANCE


Number of motors		Motor	Propulsion	Fuel
2		Volvo Penta IPS 1.200 D13	662 hp	Petrol


Max speed	Cruising speed	Water tank capacity	Tank capacity
28 - 30 kn	25 - 27 kn	1.000 l. / 264 gal.	4.000 l. / 1.056 gal.


ACCOMMODATION

BLUEGAME 74


22,8m


12


3


3

LAYOUT

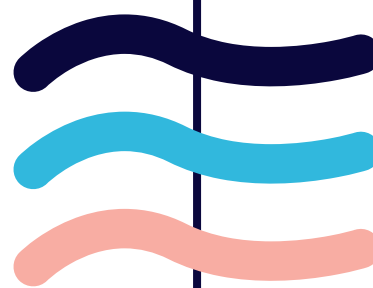
Double cabins 1

Twin cabins 2

Bathrooms 3

Crew cabins 1

Crew bathrooms 1



CAPACITY

Guests on day charter 12 Max

Guests pernocta 6 Max



EXTRAS

BLUEGAME 74

↔
22,8m

👤
12

🛏️
3

🚿
3

INCLUDED

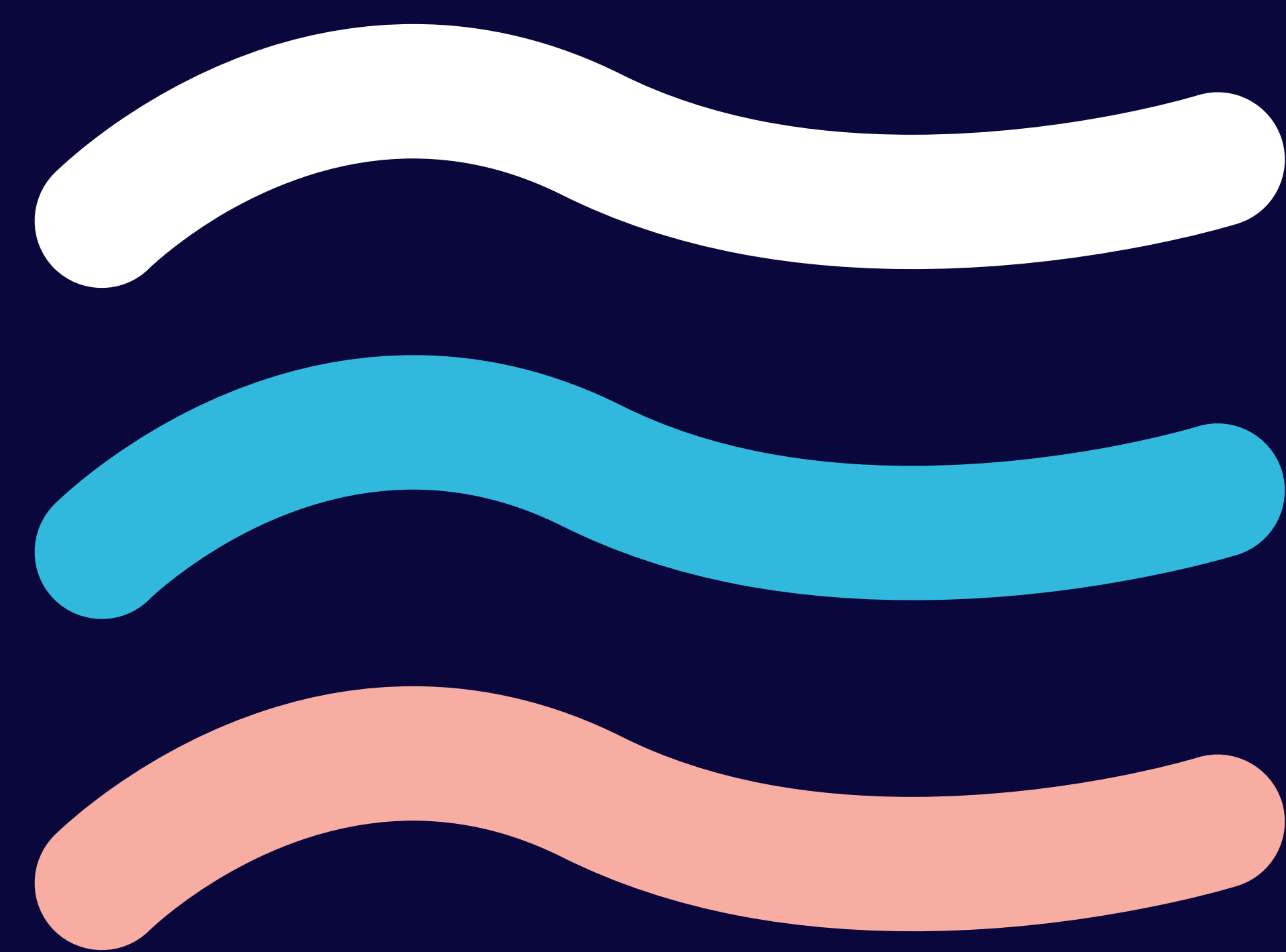
- Final cleaning ⓘ
- Skipper ⓘ
- Hostess ⓘ
- Stand up paddle
- Snorkelling equipment ⓘ
- Snacks and drinks



OPTIONAL

- Champagne bottle +150€
- Moving costs to port +250€





Charter & Sales